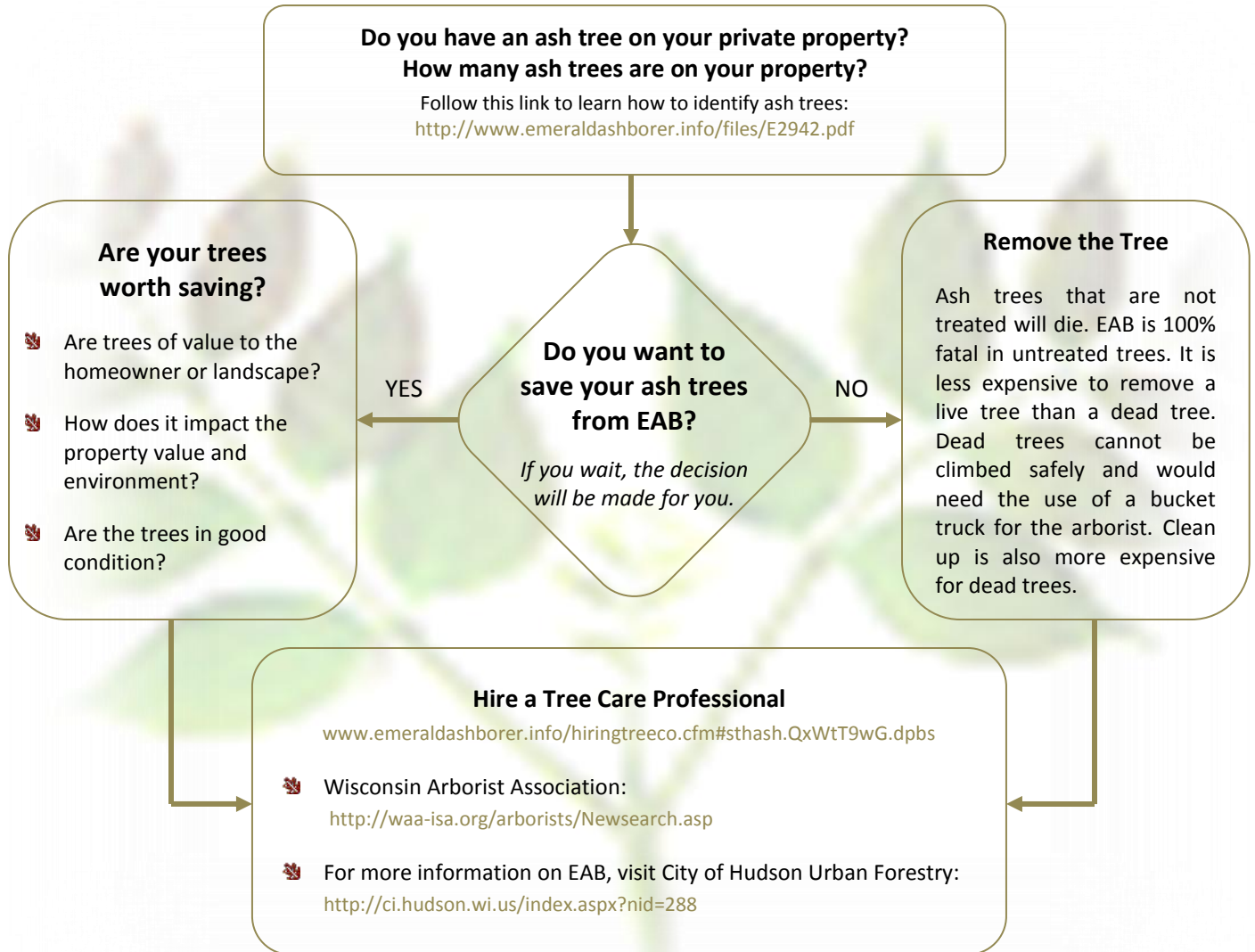


# City of Hudson Homeowners Decision Guide to Managing Emerald Ash Borer (EAB) On their Private Trees



<p><b>For EAB Treatment or Removal of Private Trees, the City of Hudson Urban Forestry Recommends:</b></p> <ul style="list-style-type: none"> <li>Obtain at least 2-3 estimates from different companies. Make sure the companies carry workers compensation insurance and insurance in case of damage to your property.</li> <li>Hire a certified arborist or prequalified contractor.</li> <li>Consider teaming with neighbors to seek discounts from tree care companies for managing all your trees at once.</li> </ul>	<p><b>Choosing which Trees to Replant on Private Property</b></p> <p>When deciding which trees to replant, choose diversity in planting new trees and plant the right tree in the right place, visit:</p> <ul style="list-style-type: none"> <li><a href="http://www.ci.hudson.wi.us/DocumentCenter/View/1291">http://www.ci.hudson.wi.us/DocumentCenter/View/1291</a></li> <li><a href="http://files.dnr.state.mn.us/education_safety/education/arbormonth/2015/pocket-guide.pdf">files.dnr.state.mn.us/education_safety/education/arbormonth/2015/pocket-guide.pdf</a></li> </ul>
---	---