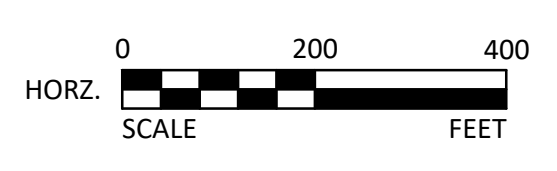


- NOTES: ALL DETOURS AND TRAFFIC CONTROL**
1. ALL DETOUR SIGNING SHALL BE DONE BY THE CONTRACTOR.
 2. LOCATION OF TRAFFIC CONTROL DEVICES ARE APPROXIMATE.
 3. ALL TRAFFIC CONTROL DEVICES SHALL CONFORM TO "THE WISCONSIN MANUAL ON UNIFORM TRAFFIC CONTROL DEVICES" INCLUDING TRAFFIC GUIDELINES MANUAL, AND WISDOT SIGNING GUIDELINES MANUAL.
 4. ALL SIGN POSTS USED TO POST DETOUR ROUTES SHALL BE REMOVED AND THE SURROUNDING GROUND RETURNED TO IT'S ORIGINAL CONDITION WHEN THE DETOUR IS TAKEN OFF THAT STREET.
 5. SEE SIGN DETAILS AND SPECIAL PROVISIONS FOR CONSTRUCTION SITE SIGNING AND BARRICADES TO BE DONE BY THE CONTRACTOR. ALL TRAFFIC CONTROL AND SIGNING, INCLUDING DETOUR SIGNING, SHALL BE THE CONTRACTOR'S RESPONSIBILITY AND SHALL BE CONSIDERED UNDER THE TRAFFIC CONTROL PAY ITEM, UNIT - LUMP SUM.
 6. SIGN PANELS ARE IN ENGLISH UNITS.
 7. FIELD MODIFICATIONS MAY REQUIRE MODIFICATIONS OF LAYOUTS AS DEEMED NECESSARY BY THE ENGINEER.
 8. COORDINATE ALL DETOUR SIGNING WITH OTHER DETOUR SIGNS FOR OTHER PROJECTS IN THE AREA. CONTACT CITY AND COUNTY STAFF TO VERIFY LOCATIONS.
 9. BARRICADES ARE 8FT TYPE III AND SHALL BE REFLECTORIZED ON BOTH SIDES.
 10. THE CONTRACTOR IS RESPONSIBLE FOR EXTRA SIGNING NEEDED TO FACILITATE TRAFFIC SWITCHES OR FOR TRANSITIONING TRAFFIC FROM ONE STAGE TO ANOTHER.
 11. THE CONTRACTOR IS RESPONSIBLE FOR PROTECTING ANY WORK AREAS NEAR TRAFFIC IN ACCORDANCE WITH THE WI MUTCD INCLUDING THE TRAFFIC GUIDELINES MANUAL.
 12. WHEN CONSTRUCTION OCCURS ON OR ADJACENT TO TRAVELED ROADWAYS, TEMPORARY TRAFFIC CONTROL SHALL BE ESTABLISHED AND MAINTAINED IN ACCORDANCE WITH THE TRAFFIC GUIDELINES MANUAL.
 13. STAND MOUNTED SIGNS SHALL BE MOUNTED AT A HEIGHT OF 6 FT FROM THE BOTTOM OF THE SIGN TO THE EDGE OF THE ROADWAY AND SANDBAGS SHALL BE MAINTAINED ON ALL LEGS AT ALL TIMES.
 14. ALL DRUMS, BARRIERS, AND SIGNS SHALL BE RETRO-REFLECTIVE.
 15. THIS DETOUR SHALL BE IN PLACE BEFORE ANY WORK BEGINS.

© Bolton & Menk, Inc. 2019. All Rights Reserved. HUDSON, WI 53122 15602 CAD/USD/116302/04.dwg 4/24/2019 3:52:28 PM



2035 COUNTY ROAD D EAST
MAPLEWOOD, MINNESOTA 55109
Phone: (651) 704-9970
Email: Maplewood@bolton-menk.com
www.bolton-menk.com

DESIGNED	NO.	ISSUED FOR	DATE
MSN	0	BID	03/11/2019
DRAWN	0	CON	04/15/2019
CHECKED	1	FO 1	04/19/2019
MSN			
BMI PROJ. NO.	N12.116302		

HUDSON, WISCONSIN
2019 VINE STREET IMPROVEMENTS & HEGGEN STREET TRAIL IMPROVEMENTS
DETOUR PLAN

SHEET
C7.04